

## How to have your say

Consultation is open from Monday 25 February until Monday 18 March 2019.

### Written feedback

- Fill out the online submission form at [ccc.govt.nz/haveyoursay](http://ccc.govt.nz/haveyoursay)
- Fill out the submission form included in this leaflet
- Email your feedback to [engagement@ccc.govt.nz](mailto:engagement@ccc.govt.nz)
- Post a letter (please ensure the letter reaches us before 5 pm on 18 March 2019) to:  
  
Tara King  
Senior Engagement Advisor  
Harrington Park concept plan  
Christchurch City Council  
PO Box 73016  
Christchurch 8154
- Or hand deliver to the Civic Offices at 53 Hereford Street, Christchurch.

### What happens next?

Once the consultation period has closed, the project team will analyse the feedback and produce a staff report which will go to the Halswell-Hornby-Riccarton Community Board for approval. At this stage we are expecting that the decision by the Board will be made in sometime in April 2019.

All submitters will receive written updates on the project, including details of the staff recommendations and decision meeting and how to request to speak at the Board meeting if they wish to do so.

If approved construction works within the park are expected to start in May 2019, however this is subject to weather conditions and contractor availability.

### Further information

If you would like to read more information on the survey results for Harrington Park please visit <https://ccc.govt.nz/the-council/consultations-and-submissions/haveyoursay/show/188>

## To comment on the plan and find out more

- 🖱️ Go online [ccc.govt.nz/haveyoursay](http://ccc.govt.nz/haveyoursay) or complete the enclosed freepost form and return to:
- ✉️ Christchurch City Council,  
PO Box 73016, Christchurch 8154

- ☎️ Speak to Tara King  
03 941 5938
- @ Tara.King@ccc.govt.nz

Consultation is open until 5pm Monday 18 March 2019

## Timeline:



## HAVE YOUR SAY

# Harrington Park, Riccarton: concept plan

Closes Monday 18 March 2019

[ccc.govt.nz/haveyoursay](http://ccc.govt.nz/haveyoursay)

Christchurch  
City Council

### What is this project about?

We have some funding available to complete the renewal of the play space and complete some landscaping works in Harrington Park in Riccarton. We would like your feedback on this draft landscape plan and also what choice of spring based play items the community would prefer.

In October last year we asked the community to complete a survey to help us understand who is using the park, how the park is being used and what type of activities the community might like to do in the park. We also spoke to lots of people at the Riccarton Community Day. The results of all of this feedback has helped us to put together a draft landscape plan for the park.

### What is due for renewal?

Not every item in the park is up for renewal. The cricket net, basketball court and the bulldozer will remain in their current locations and the cricket pitch will have minor repairs only.

### What is included in the draft landscape plan?

The draft landscape plan includes these items:

- Removal of the existing modular play equipment to be replaced with a large modular play item.
- A choice between two spring based pieces of play equipment, either a honeycomb springer or a wobbly wood bee rocker.
- Removal of the existing flying fox and replacement with a new 30 metre flying fox.
- Removal of the existing swing set and replacement with a new mega swing set with a flying saucer swing.
- Installation of a new single see-saw.
- Installation of a new birds nest carousel.
- Installation of two new picnic tables and three park benches.
- Installation of a new scooter/bike stand - currently unfunded, to be installed when funding is available.
- Relocation of one existing seat within the park.
- Planting of 17 new trees and some low level planting.
- Topping up of existing softfall (bark) in the play areas.



Harrington Park in Riccarton

### Talk to the team

Wednesday 6 March 2019,  
2 pm to 4 pm (drop in at anytime)  
Harrington Park, Peveral Street  
Riccarton

Christchurch  
City Council

Christchurch  
City Council



Harrington Park play space

### New large modular play item

The new modular play item we are proposing to install will cater for a wide range of ages, from preschool to school aged children. It includes:

- A hexagonal platform with roof
- Large mega tunnel slide and double wave slide
- Various bridges, nets, overhead monkey bars, baskets and glider, fireman pole, climbing wall and stepping posts that develop and enhance climbing, balance and co-ordination skills.



New modular play item

### Spring toy choice

There is enough funding in the budget to include one of the two spring toys in the landscape plan. We would like your feedback on whether we should include the honeycomb springer or the wobbly wood bee rocker.



Or



Honeycomb springer (left) and wobbly wood bee rocker (right)

### Flying fox

In discussions with the community there was strong support for a flying fox to be included in the landscape plan. There was also a mix of comments from those who wanted it to be a big flying fox and those who wanted a smaller flying fox for use by the younger children. We have attempted to address this by including a flying fox that is a size to cater for a wide range of ages.

The existing flying fox will be removed, however part of the existing mound will remain to provide height for the new flying fox. The new flying fox will be 30 m single traveller flying fox.



New flying fox being proposed

### See-saw and carousel

The landscape plan also includes a new single see-saw and a new 2.95m birds nest carousel.



New single see-saw (left) and carousel (right)

### Urban mega swing set

The draft landscape plan includes a swing set to replace the existing swing set in the park. This set includes two strap swings and a flying saucer swing. This swing set is higher than a usual frame so can also be used by older youth and young adults.



Replacement swing set

### Seating in the park

During our initial conversations with the community there were lots of comments about the lack of seating in the park. So the landscape plan includes two new wheelchair accessible picnic tables, three new park benches (with arm rests) and the relocation of one existing seat closer to the play spaces.



Example of an accessible picnic table

### Landscaping works

As part of the work to improve the visual look of the park and to provide sufficient shade, the plan includes planting of 17 new trees as well as low level planting and the topping up of the soft fall areas around the play equipment with bark.

### Unfunded items

The project budget does not include funding for the new bike/scooter stand. However, if the landscape plan is approved, the bike stand will be installed once funding is available.

### Accessibility into the park

Accessibility into the play space has been improved through including asphalt areas from the footpath to the play area, with access ramps into each area and between areas where the soft fall level changes. Play items (such as the carousel) that are accessible have been located nearer to entrance points of the play space.

### Size of the new play space

Due to the cost associated with the removal of the old play equipment and reinstatement of some of these areas, the new play space area will be smaller in order to meet the budget. On the plan the old play space area and swing set area is marked as a dashed line. So you can see visually how reduced in size the play space area is proposed to be.

### Riccarton Community Day

We would like to say a big thank you to those in the community that we talked to about this project at the Riccarton Community Day and who completed the survey for this project. This feedback has been invaluable in helping us to put this plan together. While the project budget does not allow us to include every idea, we have attempted to include as much as we can.



Collecting ideas at the Riccarton Community Day 2018

### Why do we need to renew the play equipment?

We plan to renew the playground equipment at Harrington Park as part of its playground renewal programme. This programme ensures that play equipment is safe, meets the current New Zealand Playground standards, and maintains an acceptable level of service for the community.



MODULAR PLAY ITEM (TR343)

1

PLEASE CHOOSE BETWEEN THESE TWO OPTIONS

2



A HONEYCOMB SPRINGER

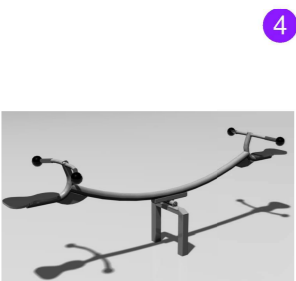


B WOBBLY WOOD BEE ROCKER



30m SINGLE TRAVELLER / FLYING FOX

3



SINGLE SEE-SAW

4



2.95m BIRDS NEST CAROUSEL

5



URBAN MEGA SWING WITH FLYING SAUCER

6

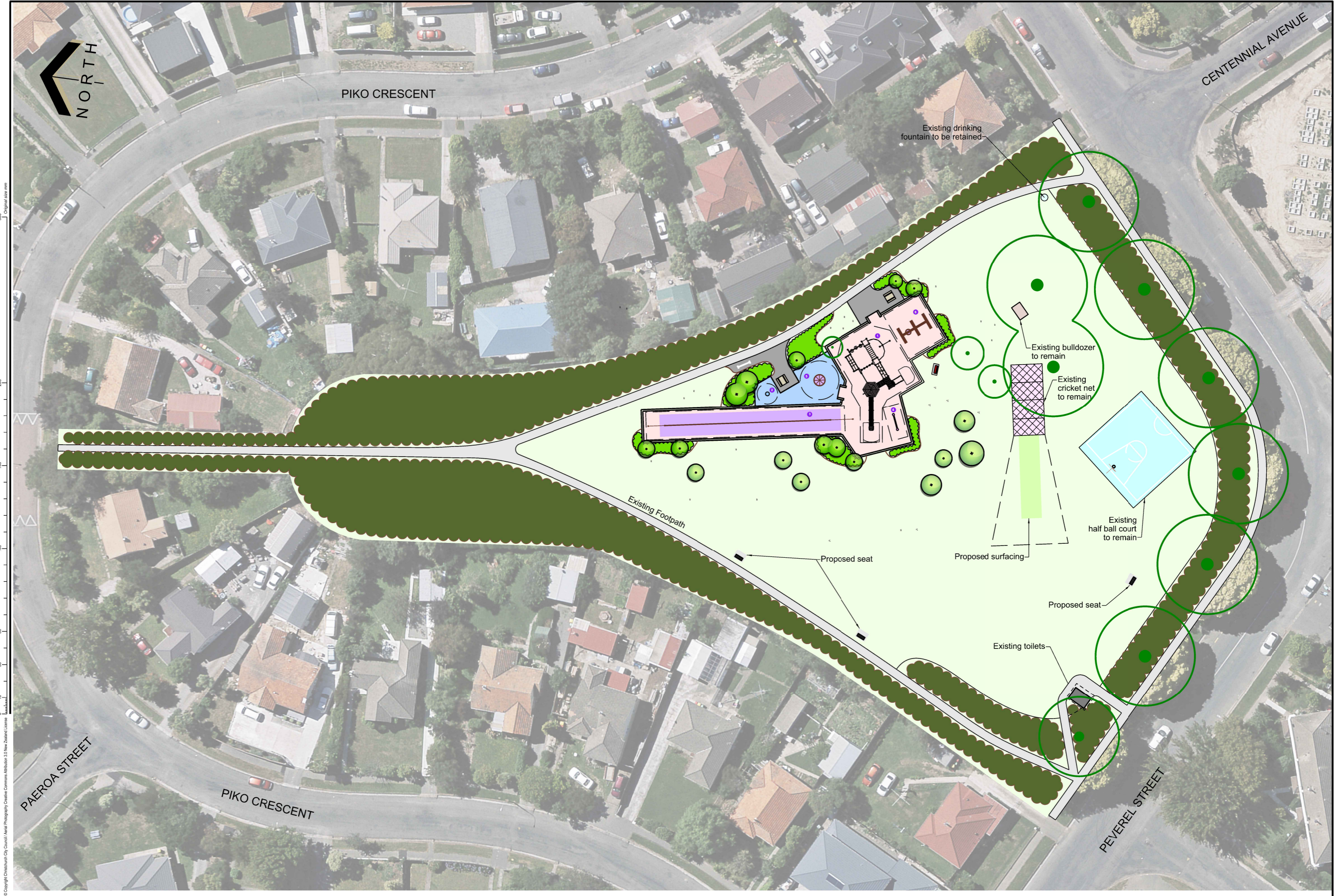
**KEY**

- Existing trees
- Proposed trees
- Existing planting/plant bed
- Proposed planting
- New Softfall area at ground level (Bark Mulch)
- Raised softfall (300mm) (Bark Mulch)
- Lawn Area
- Extent of existing playground to be removed and reinstated in lawn

**NORTH**



Original size mm  
300  
200  
150  
100  
50  
30  
10  
0



0 10 30 50 100 150 200 300  
 Original size mm  
 © Copyright Christchurch City Council / Aerial Photography Creative Commons Attribution 3.0 New Zealand License